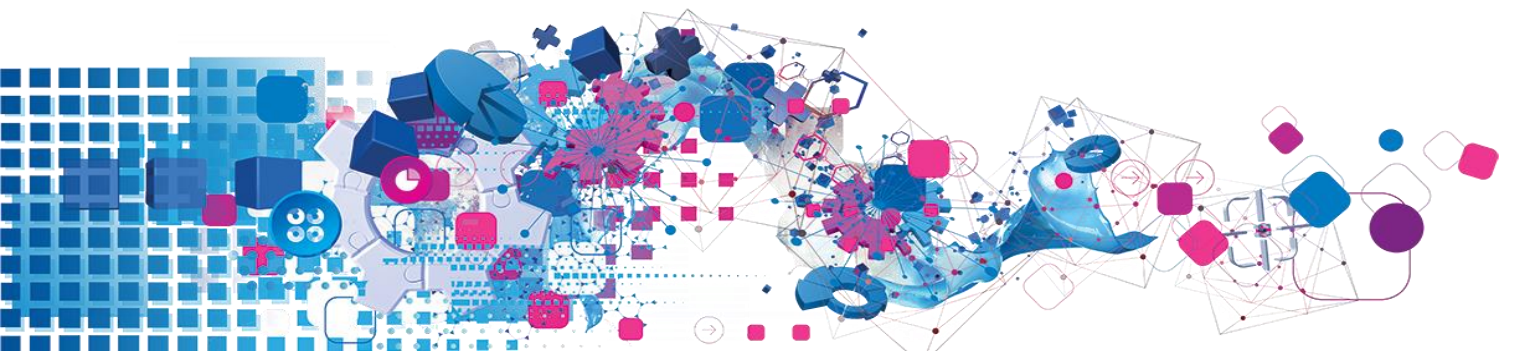


# Tiger Co-ordinates



## Disclaimer

E&OE. Information in this document is subject to change without notice. Experian Limited reserves the right to revise its products as it sees fit. This document describes the state of this product at the time of its publication and may not reflect the product at all times in the future.

Use of this Product is subject to the terms of the Experian evaluation license in the case of an evaluation, and to the Experian License Terms & Conditions in the case of full commercial use of the product and will also be subject to Data Provider terms. By downloading, installing or using this product, you agree to comply with all the relevant terms. Please refer to these terms for all permitted uses and applicable restrictions on the use of the product.

The liability of Experian Limited with respect to the documentation and the licensed programs referred, are set out in that software license agreement. Experian Limited accepts no liability whatsoever for any use of the documentation or the licensed programs by any person other than a permitted user under the software license agreement.

Licensees shall not use the DPV technology to artificially compile a list of delivery points not already in Licensee's possession or to create other derivative products based upon information received from or through the DPV product technology.

## Copyright

All copyright and other rights in this manual and the licensed programs described in this manual are the property of Experian Limited save for copyright in data belonging to United States Postal Service, Experian Marketing Solutions Inc, and all extracts, derivatives and updates. No part of this manual may be copied, reproduced, translated or reduced to any electronic medium or machine readable form without the written consent of Experian Limited.

United States address data is © United States Postal Service 2018. This information was published by Experian Limited, a company which holds a non-exclusive license from the United States Postal Service to publish data information. The price of said data is neither established, controlled or approved by the United States Postal Service. United States names data is © Experian Marketing Solutions Inc.

Microsoft, Word and Windows are trademarks of Microsoft Corporation.

© Experian Ltd. 2020

## USPS Trademark

Experian Marketing Services (EMS) is a non-exclusive NCOALink® Full Service Provider Licensee of USPS®. Prices for EMS/Products and services are not established, controlled or approved by USPS or the United States Government.

The following trademarks are owned by the United States Postal Service®: CASS™, CASS Certified™, DPV™, LACSLink™, NCOALink®, Post Office™, Postal Service™, The Postal Service™, US Postal Service™, U.S. Postal Service®, USPS, ZIP™, ZIP Code™ and ZIP + 4®.

This list is not exhaustive of the trademarks belonging to the Postal Service.

## Contacts and Support

For resolutions to common issues, answers to frequently asked questions and hints and tips for using our products:

[www.edq.com/documentation/contact-support/](http://www.edq.com/documentation/contact-support/)

For information about data expiry, data vintage and how to keep your data up to date:

[www.edq.com/documentation/data](http://www.edq.com/documentation/data)

For more information about us and to get in touch:

[www.edq.com](http://www.edq.com)

Revision 5, April 2018

# Contents

- Introduction..... 2
  - What is a DataPlus Set?..... 2
  - Latitudes and Longitudes..... 2
- About This Data..... 3
  - What is the USA TIGER Co-ordinates DataPlus?..... 3
  - Area Covered..... 3
- About DataPlus Information..... 4
  - DataPlus Elements..... 4
  - Match Levels..... 4
  - Calculation of the Co-ordinates..... 5
    - Single Record Match..... 5
    - Multiple Record Match..... 5
    - No Matching Records..... 5

# Introduction

Filename:	usatgr.dap
Approximate Data Size:	200MB
Data Source:	United States Postal Service (USPS) All data, extracts and updates © USPS
Update Frequency:	Bi-monthly
Expiry:	Data Files will expire 135 days after creation. Ensure every data update is applied promptly, otherwise the data may expire and the product will become unusable.

## What is a DataPlus Set?

DataPlus is a product that enables you to retrieve specific data for an address. DataPlus can provide a wide range of information relating to an address, as a supplement to Pro. DataPlus information is contained in data sets. Each piece of information relates to a locality, ZIP code, or, when the Data requires higher resolution, to the Delivery point (letter box). DataPlus handles information in terms of a code and its related description (if there is one). For example, a data set containing co-ordinates would contain only codes.

## Latitudes and Longitudes

Latitudes and longitudes are co-ordinates, based on degrees, used to describe a position on Earth.

Longitude lines are made by circles that intersect with both the North and the South Poles. Each longitude can be thought of as dividing the Earth in half. Longitudes are measured in half circles of 0° to 180° East and from 0° to 180° West from the Royal Greenwich Observatory in Greenwich, England.

Latitude lines are made by circles that run parallel to the equator and grow progressively smaller as they get closer to the poles. Latitude is measured as an angle from the Equator of the Earth (0°) to the North Pole (90° North) or to the South Pole (90° South).

# About This Data

## What is the USA TIGER Co-ordinates DataPlus?

The USA TIGER Co-ordinates DataPlus (referred to as 'TIGER') is a data set that is used in conjunction with USA data. The TIGER data is provided by the USPS and is based on surveys carried out by the US Census Bureau. It returns latitude and longitude co-ordinates against ZIP+4 codes.

The TIGER DataPlus is designed to be used with Pro and Pro Web. When an address search is completed the DataPlus set provides latitude and longitude co-ordinates for that address.

Where there is no co-ordinate for a ZIP+4 in the TIGER data, a ZIP+2 area average is calculated and returned. Where there is no co-ordinate for a ZIP+2 in the TIGER data, a ZIP average is returned. If it is not possible to return to a ZIP match, then no data is returned. The set contains a flag to indicate the match level.

## Area Covered

The TIGER data covers the United States of America.

# About DataPlus Information

## DataPlus Elements

The TIGER DataPlus set returns a maximum of three elements. The elements returned from the DataPlus set are as follows:

Name	Description
Latitude	The latitude, given to an accuracy of six decimal places. All latitudes in the USA are positive.
Longitude	The longitude, given to an accuracy of six decimal places. All longitudes in the USA are negative.
Match level	The accuracy with which the address was matched with the TIGER data.

The following address returned by Pro:

1 TimesSq  
NewYork NY 10036-6519

Will have this information attached:

Latitude: 40.756251  
Longitude: -73.986183  
Match Level: Four

The co-ordinates for this address are:

40.756251° N, 73.986183° W

## Match Levels

There are four different types of match level that can be returned. These are:

Name	Description
Four	This indicates that a ZIP+4 match has been achieved.
Two	This indicates that a ZIP+4 match was not possible as there were no co-ordinates for the ZIP+4 in the USPS data. In this case, the co-ordinates that have been returned are a ZIP+2 level centroid.
ZIP	This indicates that the neither a ZIP+4 or a ZIP+2 match was available; instead the match level is at ZIP code level.
Blank	If there is no match level returned, then there will be no co-ordinates returned either. For instance, this is the case with overseas military addresses and non-residential areas.

## Calculation of the Co-ordinates

The TIGER data consists of start and end points of lines (roads). It therefore contains a start co-ordinate and an end co-ordinate for each line.

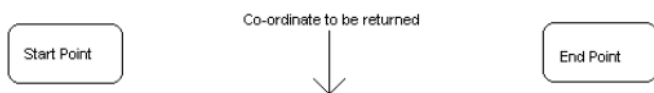
The following is a description of how the co-ordinates returned by the TIGER DataPlus set are calculated.

When an address is searched for, for a given ZIP+4, one of the following scenarios occurs:

- Single record match.
- Multiple record match.
- No matching records.

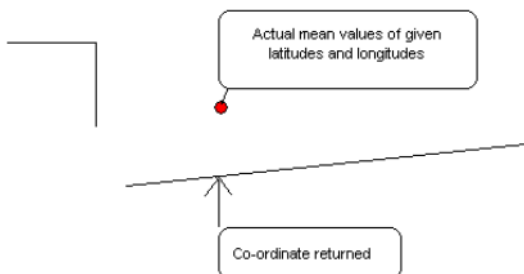
### Single Record Match

A single record match occurs when one TIGER record is matched against the ZIP+4 of the address searched for in Pro. One TIGER record contains the start and end points for the ZIP+4. This means a start point with latitude and longitude, and an end point with latitude and longitude. The co-ordinate returned is the mid-point of the line, and the match level is “Four”.



### Multiple Record Match

A multiple record match occurs where there are multiple TIGER records matching the same ZIP+4. In this case, the mean point of all the start and end co-ordinates is calculated, then the TIGER co-ordinate closest to that mean point is returned. This is shown in the following diagram:

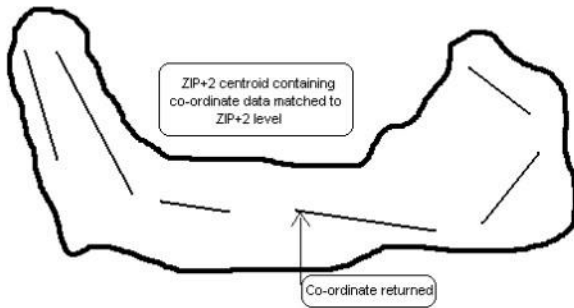


In the above diagram there are three lines returned for this particular ZIP+4. This means that there are six co-ordinates returned. The mean point for these six co-ordinates is calculated. The nearest point, on one of the lines, to the mean is returned.

### No Matching Records

This occurs when there are no TIGER records present for an address' ZIP+4. If this occurs the DataPlus set will find all the co-ordinates for the ZIP+2. A centroid is generated for all matching TIGER rows for the Zip+2. A mean of all of the generated co-ordinates is calculated and the closest point on the line to the mean is returned. The match level is “Two”.

DataPlus guide  
Tiger Co-ordinates



There may also be instances when there are no TIGER records present for an address' ZIP+2. If this occurs, then a centroid of all the co-ordinates matched against the ZIP level is created. The co-ordinate returned is calculated the same way as the ZIP+2 level match above. The match level is "ZIP".

If there are no TIGER records present for an address' ZIP level, then no co-ordinate is returned, and the match level is blank. This can happen with overseas military bases.